

# Description

## General Notes

Series 04, a modular switching system, offers users a wide range of possible combinations. A broad variety of actuators is available, round or square in shape, for use as pushbuttons, illuminated pushbuttons, keylock switches or lever-operated switches, and indicators. Other special actuators, such as mushroom heads or emergency stop switches and buzzers can also be supplied.

## Configuration

Max. 3 switching elements, as snap-action or slow-make switches, can be clipped as modules to each actuator. Each switching element is equipped with 1 or 2 independent switching system with normally closed or normally open contact. The standard contact material is hard silver.

## Mounting

The Series 04 standard pushbuttons are mounted in a 22,5 mm dia. cut-out. Flush mounted pushbuttons are mounted in a 30,5 mm dia cut-out.

## Terminals

The switching elements and the lamp blocks can be supplied with screw or plug-in terminals.

## Lenses

Lenses of transparent plastic or aluminium are available in various standard colours.

## Marking

For engravings, hot stamping, film inserts with standard legends or symbols, see page 143.

## Illumination

Illuminated pushbuttons or indicators can be supplied with lamps Ba 9s (6-130 V), Multi-LED lamps Ba 9s (6, 15, 24, 48 V) or with neon lamps Ba 9s.

## Position indicating

When a switch with maintained action is actuated, the lens remains in the depressed position mechanically. The state of the switch is apparent at all times from the position of the lens

## Keylock switch

Standard lock No. = 251 with ending of part No. 0 (example 704.335.0). Following lock No. also available (lock No./ending of part No.) 252/1, 253/2, 254/3, 255/4, 256/5, 257/6, 259/8, 260/9. 2 keys will be delivered per keylock switch.

*All dimensions in mm.*

*We reserve the right to modify technical data.*

## Rotary switch

The rotary switches of Series 04 are ideal control and instrument switches. The switch types (CG4-1) are suitable special for switch for small voltages. They comply with the rules IEC 947-3 and VDE 0660, part 107.

The axial arrangement of the connector block gives the opportunity to mount the switches side-by-side or next to the cable duct. The contact marking remains legible in mounted situation too.

The required space of this switch is very small.

## Number structure

704.XXX.X



Lens colour

Switch variant

704.9XX.X

Switching element

Example:

-Illuminated pushbutton; round, momentary action, plastic front ring, black; lens red  
704.029.2

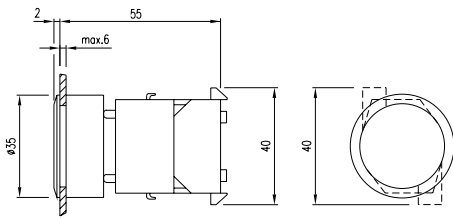
-Snap-action switching element, 1 normally open contact, screw terminals, hard silver  
704.900.1

	colour of front bezel/ring	lens/markings foil	colour of lens	30 x 30 mm Typ-Nr.	29 mm dia. Typ-Nr.	circuit drawing			technical drawing			mounting dimensions		
<b>indicator/flasher front illumination</b> with plastic lens and front ring, for filament lamp or multi-LED	grey	transparent/translucent	blue		<b>704.002.6</b>	1	2	2	1	2	2	0,050		
			yellow		<b>704.002.4</b>	1	2	2	1	2	2	0,050		
			green		<b>704.002.5</b>	1	2	2	1	2	2	0,050		
			clear		<b>704.002.7</b>	1	2	2	1	2	2	0,050		
			red		<b>704.002.2</b>	1	2	2	1	2	2	0,050		
	black	transparent/translucent	blue		<b>704.006.6</b>	1	2	2	1	2	2	0,050		
			yellow		<b>704.006.4</b>	1	2	2	1	2	2	0,050		
			green		<b>704.006.5</b>	1	2	2	1	2	2	0,050		
			clear		<b>704.006.7</b>	1	2	2	1	2	2	0,050		
			red		<b>704.006.2</b>	1	2	2	1	2	2	0,050		

circuit drawings from page 131, technical drawings from page 122, mounting dimensions from page 129

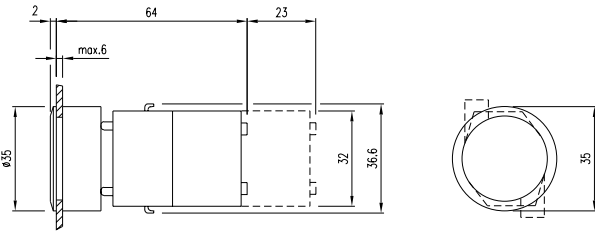
## 15 indicator/flasher for flush mounting

page 89



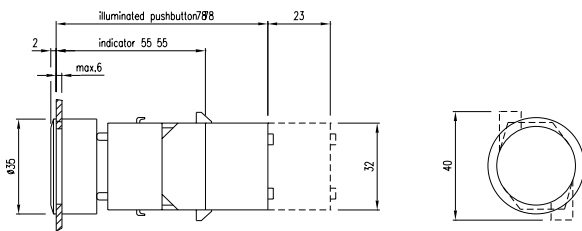
## 16 pushbutton actuator for flush mounting

page 90



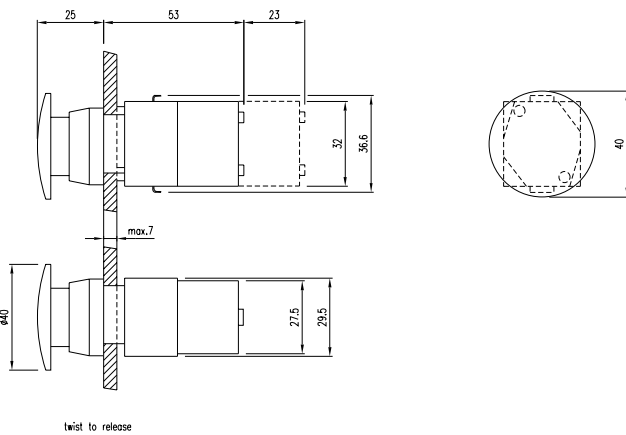
## 17 illuminated pushbutton actuator for flush mounting

page 91



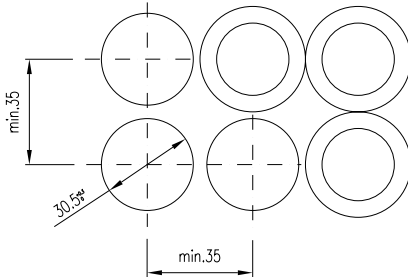
## 18 emergency stop switch actuator for flush mounting

page 92



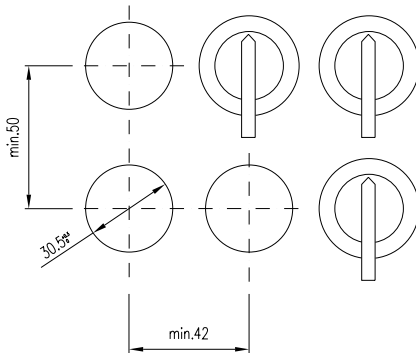
7 indicator/flasher for flush mounting, pushbutton actuator for flush mounting, illuminated pushbutton actuator for flush mounting, emergency stop switch actuator for flush mounting, keylock switch actuator with 2 positions for flush mounting, keylock switch actuator 3 positions for flush mounting, selector switch actuator 2 positions for flush mounting, short lever, selector switch actuator 2 positions for flush mounting, long lever, selector switch actuator 3 positions for flush mounting, lever short, key insert switch actuator 2 positions for flush mounting, key insert switch actuator 3 positions for flush mounting, buzzer for flush mounting IP40, front bezel-set for flush mounting

page 89, 90, 91, 92, 92, 93, 94, 94, 95, 97, 97, 98, 99



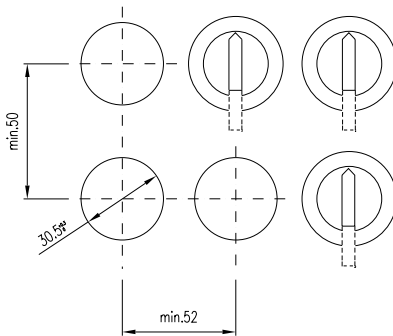
8 selector switch actuator 3 positions for flush mounting, long lever

page 96



9 rotary selector switch actuator for flush mounting

page 96



## circuit drawings

1 indicator compact full face illumination, indicator/flasher full face illumination, indicator/flasher front illumination, indicator/flasher for flush mounting, indicator actuator for indicator compact, lamp block

page 72, 73, 74, 89, 109, 110

×1-



×2+